

PHOTOGRAPHY:

Lesson: 1dh

Purpose: To use our Colour Tools and extend our knowledge to: Dodging/Burning and Sharpening an image. Students are asked to supply colorful draping and hooded attire to practice the colour tools in Photoshop.

Title: Dodging/Burning and Sharpening.

Suggested Workflow:

DSLR camera: Lens Portrait 55 -200mm set to 105mm or use the f/1.8 55mm lens
Image quality: JPEG White Balance: Day-light Metering: Spot Shot: Single Priority: ISO: 200 Focus: Manual
Other: Tripod.
Continuous lighting lamps

Steps to our development. To this point we have learned:

1. Brightness and Contrast through Exposure; Levels and Curves.
2. Colour Adjustments through Colour Balance and Hue/Saturation
3. And now: Dodging/Burning and Sharpness.

**These are the primary Image editing tools

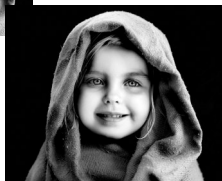
Examples of Hooded and draped Subjects: For our purposes, we need colour.



The above are examples of draping, below is an example of the colour students should aim for in their choice.



Example of the dodge/Burn effect.

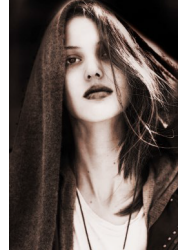
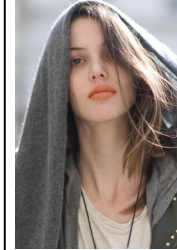


Examples of the colour tools in photoshop can be applied:



Photoshop Dodge and Burn—follow Video: Dodge and Burn.

1. Drag in Image. Change Background Layer to working Layer: Hold Alt Key Double-Click lock icon on Layer.
2. Copy Layer: Ctrl+J
3. Select/Colour Range/Sampled Colors/Selection/Black matte—sample with eyedropper—adjust Fuzziness till image blackens—sample with +eyedropper until background is all black. Click OK.
4. Use any of the selection tools to add and subtract from the selection.
5. Click on the eye (view) of the layer below.
6. Press Delete to remove the white background to transparency
7. Ctrl+ D to deselect.
8. Hold Ctrl and Click on the New Layer icon to create a new layer under the current.
9. Make the Background colour light blue; Foreground white.
10. Gradient Tool. Set Foreground to Background. Set Radiant for the Gradient.
11. Hold shift key and drag from the center of the image to the edge.
12. Go to top layer and Merge down with Backdrop.
13. Turn the layer view back on for the layer below and make the top layer a layer mask—tweak the edges of the images!
14. Stamp the top layer: Ctrl+Alt+Shift+E. Call layer Stamped. Ctrl+ J to copy it!
15. Mode/Lab Colour—Yes to Merge! Ctrl+ J; Ctrl+ J to copy twice. Click on Channels tab: Click on Lightness (only one active).
16. Burn Tool—Shadows—28%. Darken over all dark areas
17. Dodge Tool—Highlights 28%. Lighten over all light areas.
18. Click on Lab in the Channels and then Click on the Layers Tab.
19. Image/Mode/RGB colour/ do not Merge layers so that we keep the layers below—Bring down the Opacity of the Layer to about 75% to reduce the harshness.
20. Filter/Sharpen/Smart Sharpen—adjust to taste.
21. You can drag the original from the bottom, create a Layer Mask and "teak" the image harshness
22. Stamp.
23. Save PSD and jpg.



Photoshop Grunge: - Follow Video: Grunge.

1. Drag in image
2. Copy Background: Ctrl+J
3. Copy Again: Ctrl+J
4. Burn Tool: use Shadows, 22% go over all dark areas.
5. Dodge Tool: use Highlights, 22% go over light areas.
6. Fade High Pass: Use Multiple and bring down Opacity.
7. Stamp Layer: Ctrl+Shift+Alt+E
8. Smart Sharpen
9. Create New Adjustment Layer: Black and White. Adjust for red and Yellow.
10. Adjust Opacity of Black and White layer to bring back colour from layer below: desaturated brown look!
11. Stamp Layer: Ctrl+Shift+Alt+E
12. Adjust the Hue/Saturation of the Layer.
13. Choose Blend Mode: Screen for the layer and adjust the Opacity.
14. Copy the Layer: Ctrl+J
15. Choose a Green for the Fore-ground Colour.
16. Choose the Colour Replacement Tool.
17. Paint over the Eyes.
18. Make a Layer Mask for the Layer and paint back the pupil of the eye—delete an over paint at the edge of the iris.
19. Stamp the image
20. You can sharpen and tweak the image more if desired.
21. Save the image as a PSD and jpg.



Image after Dodging/Burning, then Sharpening.



Save in folder called: Dodge

In this image previously learned techniques were employed for the colour.